

Thames Water Region Sewerage & Pumping Stations Statistics (1998)

Population Total 11.9M (+0.42M Non Resident)

Sewage Collected Daily Total – 2750 Mlt/day (32 m³/sec)

Sewage Treatment Works - Total 395

Largest Beckton – Population 3M – DWF 8 m³/sec

2000km Trunk Sewers

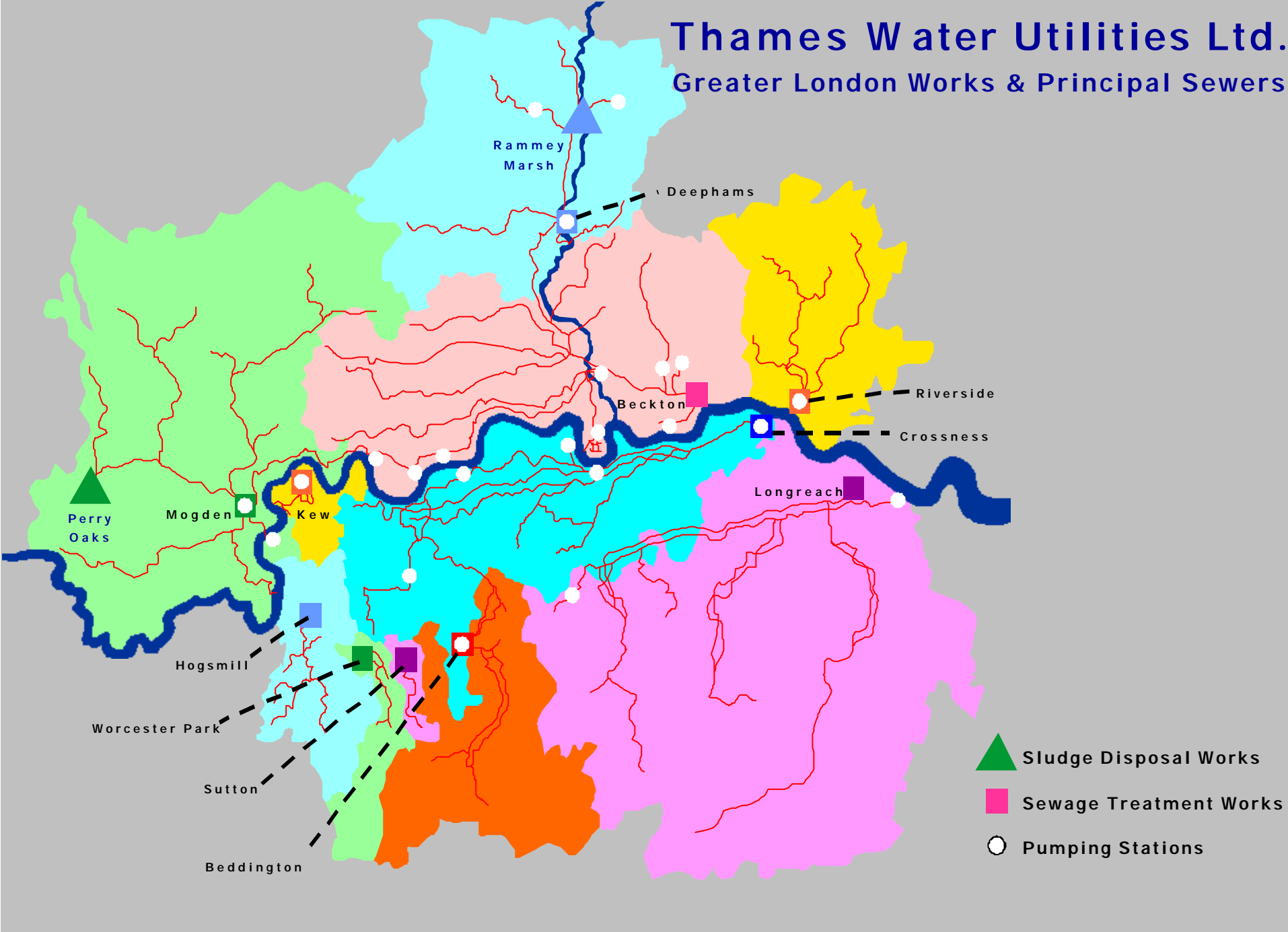
77,670km Total Sewers

2427 Pumping Stations

30 Major London Pumping Stations

Largest – Abbey Mills F Station – 32 m³/sec

Thames Water Utilities Ltd. Greater London Works & Principal Sewers



Operational Controls and Fittings

Penstocks / Valves / Baffles

Backdrops / Dropshafts

Cascades

Siphons / Inverted Siphons

Weir Overflows / River Outfalls

Stilling Pond Overflows

Oriface Plates

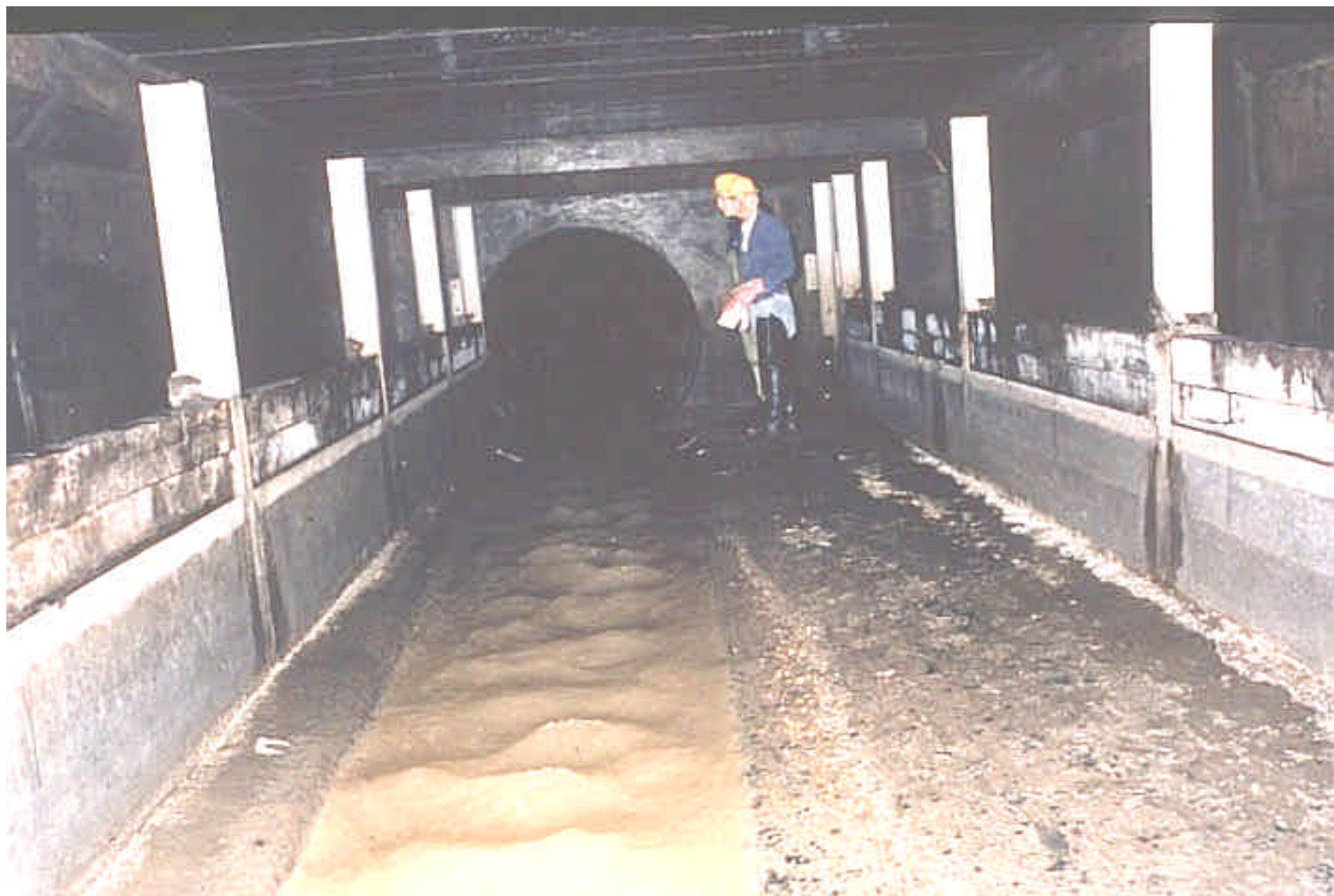
Throttle Pipes / Hydrobrakes

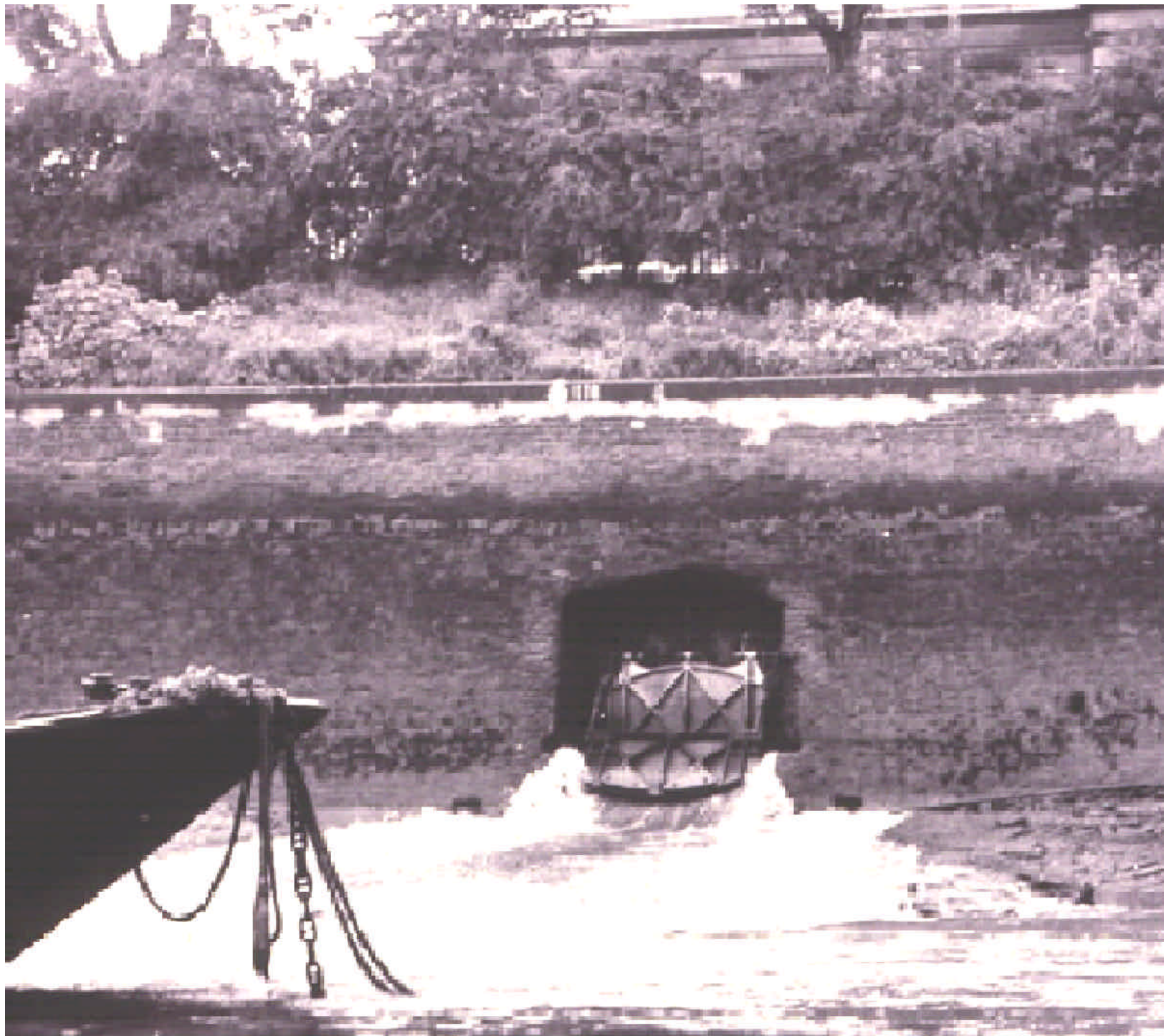
Venturi Flumes

Storm / Attenuation Tanks









West Middlesex Main Drainage in 1936



— MIDDLESEX COUNTY COUNCIL —

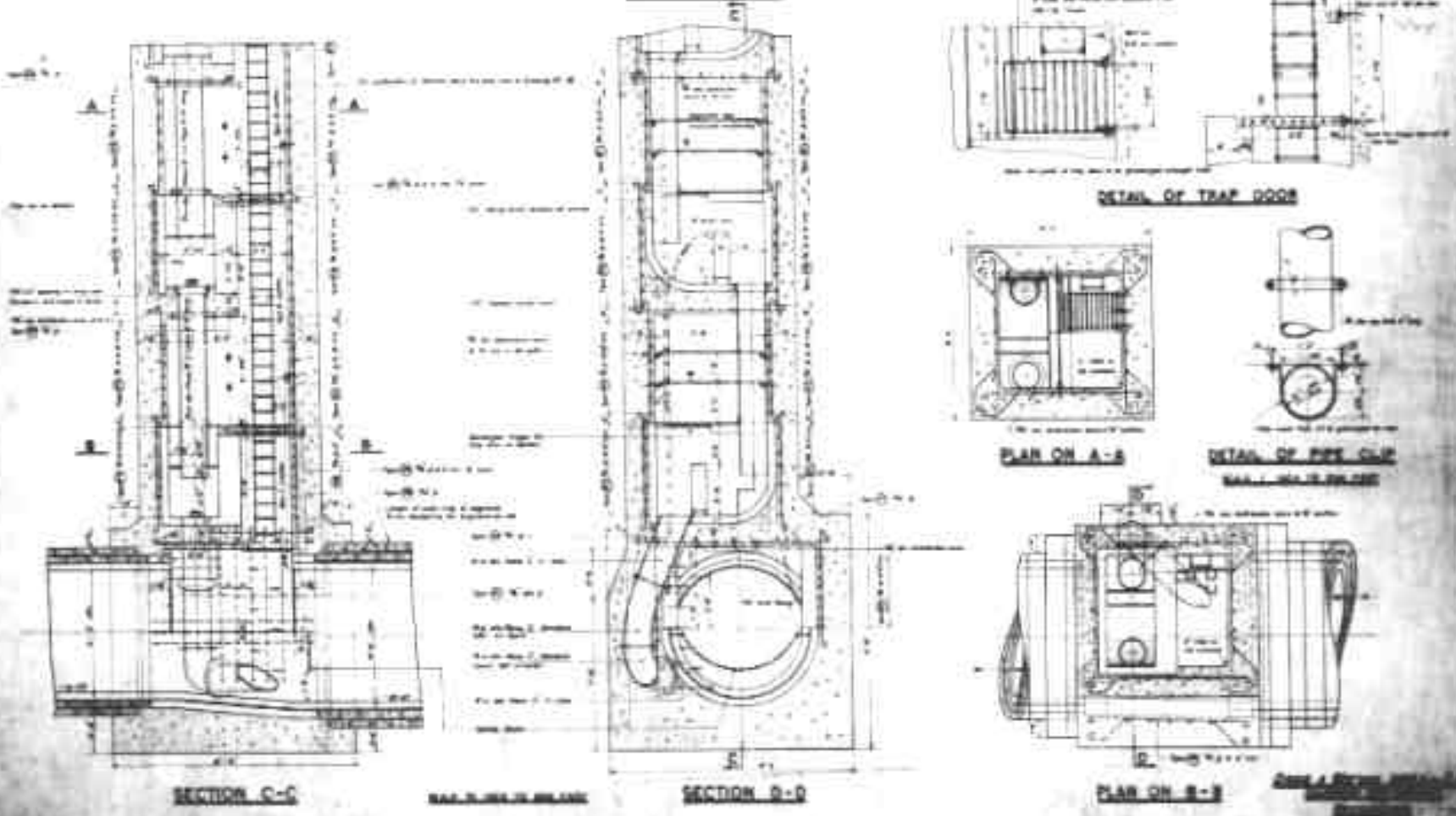
— WEST MIDDLESEX MAIN SEWERAGE —

— WESTERN LOW-LEVEL SEWER — LOWER SECTION —

CONTRACT NO. 818
DRAWING NO. 27

- 1. As shown on drawings
- 2. As shown on drawings
- 3. As shown on drawings
- 4. As shown on drawings
- 5. As shown on drawings

— MANHOLE NO. 27 —



SECTION C-C

SCALE 1/4" = 1'-0"

SECTION D-D

PLAN ON A-A

DETAIL OF PIPE CAP
SCALE 1/4" = 1'-0"

PLAN ON B-B

DATE & TIME
DRAWN BY
CHECKED BY

MIDDLESEX COUNTY COUNCIL

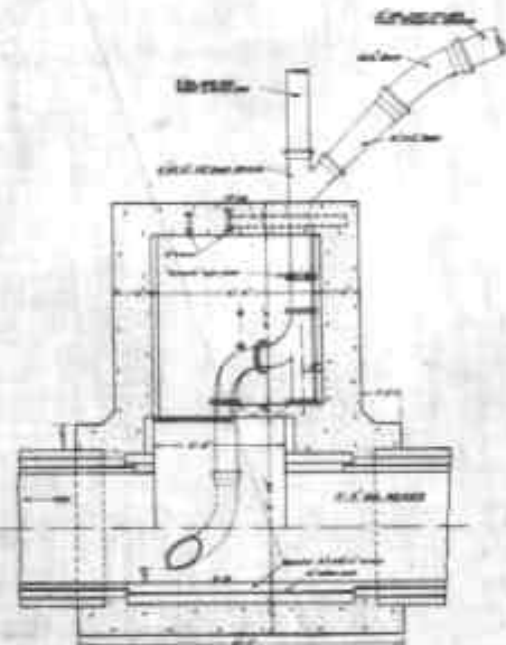
WEST MIDDLESEX MAIN SEWERAGE

CONTRACT NO 516

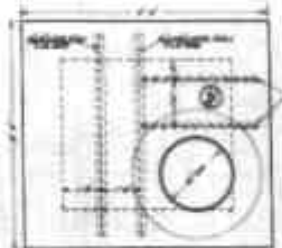
WESTERN LOW LEVEL SEWER LOWER SECTION

MANHOLE NO 7

NOTE
In all dimensions and elevations
the metric system of units shall be
used, unless otherwise stated.

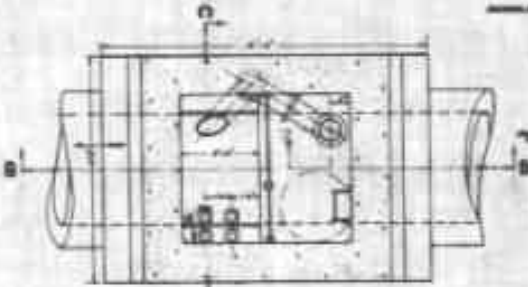


SECTION B-B

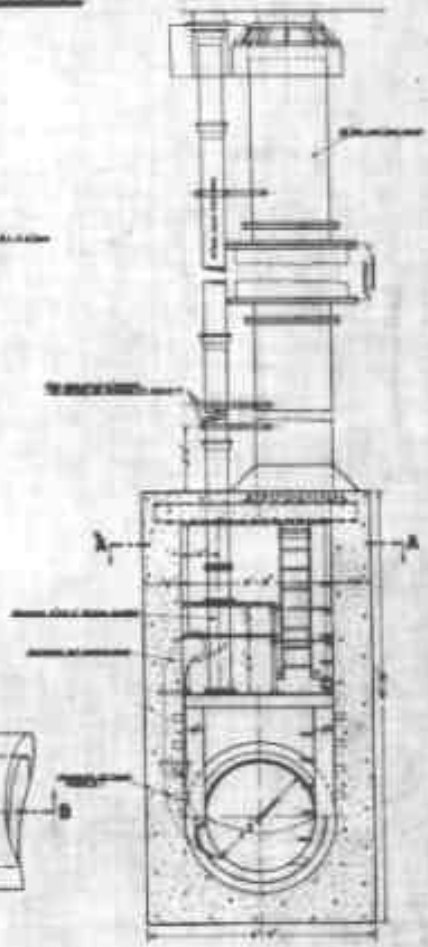


PLAN OF ROOF SLAB

SCALE 1:100 TO DIMENSIONS



PLAN ON A-A

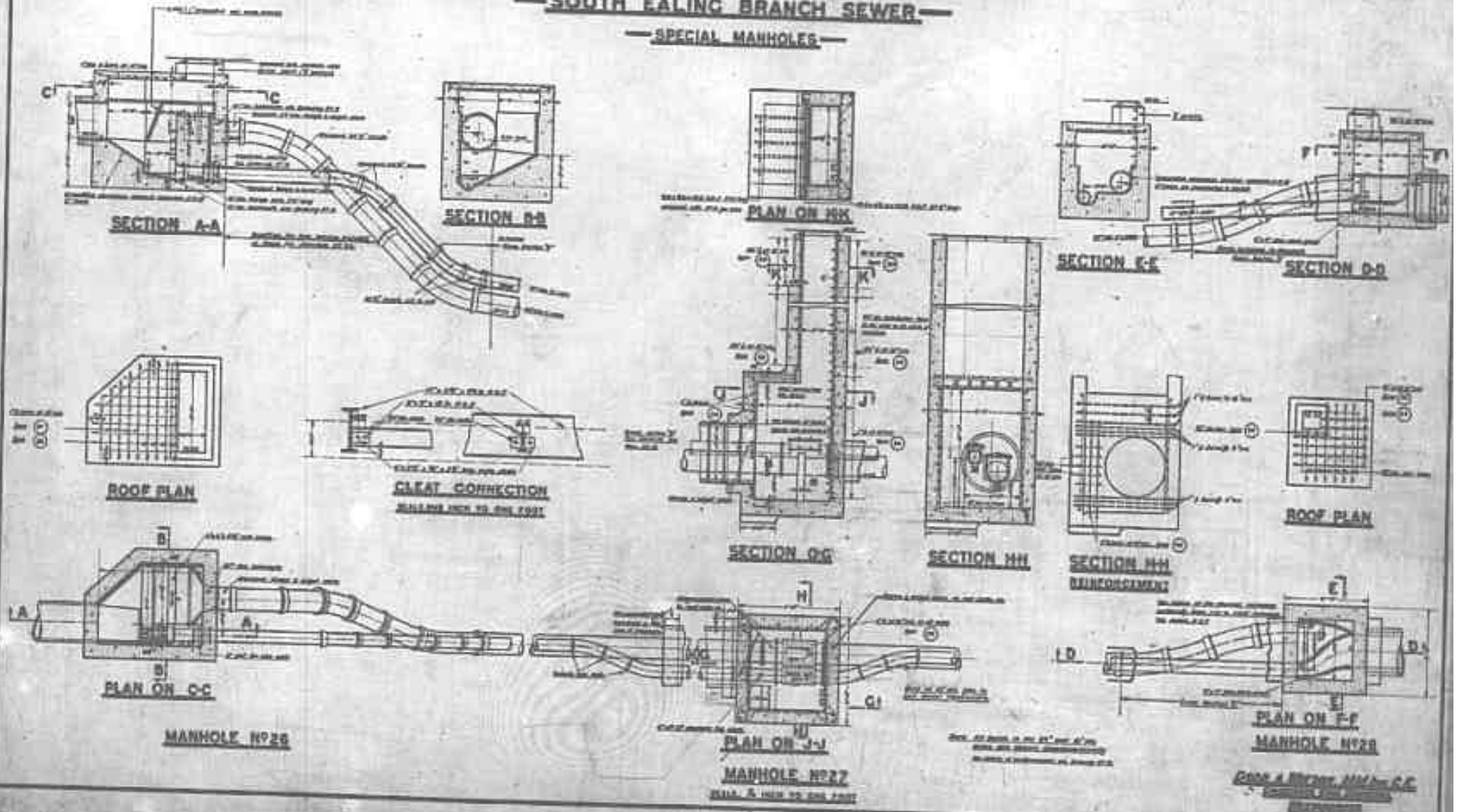


SECTION C-C

Drawn & Checked: HW & CC
Approved: PW & SM
Engineer
1998

— MIDDLESEX COUNTY COUNCIL —
— WEST MIDDLESEX MAIN SEWERAGE —
— SOUTH EALING BRANCH SEWER —
— SPECIAL MANHOLES —

CONTRACT NO 525
DRAWING NO 13



CODE & REFERENCE: MVA-CC
DATE: 1911